

DS-9632NXI-I16/VPro I/VPro Series NVR with AcuSeek



- H.265+/H.265/H.264+/H.264 video formats
- Intelligent analytics based on Guanlan Large-Scale AI Models
- Up to 32-ch AcuSeek and AcuSearch function
- Up to 8-ch facial recognition for face picture
- Up to 32-ch IP camera inputs
- Up to 32-ch 1080p decoding capability
- Up to 8-ch IP speakers can be connected

▪ Function

Compression and Recording

- H.265+ compression effectively reduces the storage space by up to 75%
- Full channel IP cameras connection
- Compatible to third-party network cameras

HD Video Output

- Provide independent HDMI and VGA outputs
- HDMI video output at up to 4K resolution

Storage and Playback

- Up to 16 SATA interfaces for HDD connection
- 16-ch synchronous playback

Smart & POS Function

- Support multiple VCA (Video Content Analytics) events
- Integrates SmartSearch, AcuSearch, and AcuSeek functions for optimized playback efficiency
- POS triggered recording and alarm, POS information overlay on live view and playback

Network & Ethernet Access

- 2 self-adaptive 10/100/1000 Mbps Ethernet interfaces
- Hik-Connect & DDNS (Dynamic Domain Name System) for easy network management

▪ Specification

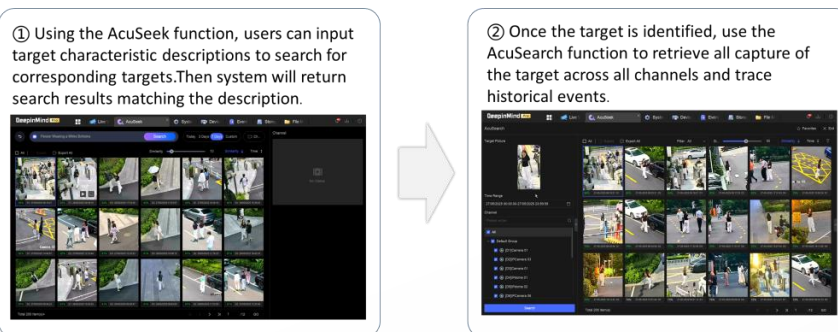
| Intelligent Analytics | |
|--|--|
| AI by NVR | Facial recognition |
| AI by NVR and Camera | Facial recognition, perimeter protection, video structuralization, AcuSearch, motion detection 2.0, ANPR, people counting, AcuSeek |
| Engine | 2 engines. 1 is for face picture and AcuSearch. 1 is for AcuSeek |
| Facial Recognition | |
| Face Picture Library | Up to 16 face picture libraries, with up to 50,000 face pictures in total (each picture ≤ 4 MB, total capacity ≤ 1 GB) |
| Face Picture Comparison | 8-ch |
| Facial Detection and Analytics | Face picture comparison, human face capture, face picture search |
| Facial Detection and Analytics Performance | 4-ch human face capture (HD network camera, 4-ch 2MP, 2-ch 4MP, 1-ch 8MP, H.264/H.265) |
| AcuSearch | |
| Performance | If the cameras support Hikvision AcuSense Technology and have enabled AcuSearch function, the NVR supports AcuSearch in all channels, capable of modeling 300,000 targets/day. |
| AcuSeek | |
| Performance | If the cameras support Hikvision AcuSense Technology and have enabled AcuSearch function, the NVR supports AcuSeek in all channels, capable of modeling 300,000 targets/day. |
| Search Language | English, French, Italian, German, Polish, Portuguese, Thai, Russian, Arabic, Turkish, Spanish, Dutch, Romanian, Czech, Swedish, Croatian, Latvian, Ukrainian, Hungarian, Danish, Japanese, Korean, Vietnamese, Indonesian, Brazilian Portuguese, Traditional Chinese |
| ANPR | |
| By Camera | <p>All channels</p> <p>Support Countries & Regions:</p> <ol style="list-style-type: none"> 1. Myanmar, Philippines, Indonesia, Vietnam, Pakistan, New Zealand, Australia, Sri Lanka, Singapore, Malaysia 2. Turkey, Croatia, Slovakia, Czech Republic, Bulgaria, Macedonia, Hungary, Greece, Poland, France, Netherlands, Switzerland, Spain, The United Kingdom, Ireland, Germany, Italy, Austria, Palestine, Latvia, Lithuania, Estonia, Belgium, Luxembourg, Ukraine, Uzbekistan, Kazakhstan, Mongolia, Moldova, Kyrgyzstan, Azerbaijan, Georgia, Armenia, Albania, Kosovo, Belarus, Cyprus, Denmark, Finland, Malta, Portugal, Romania, Slovenia, Sweden, Israel, Bosnia and Herzegovina, Turkmenistan, Montenegro, Serbia, Tajikistan, Iceland, Liechtenstein 3. Argentina, Brazil, Chile, Colombia, Peru, Ecuador, Paraguay, Uruguay, Salvador, Bolivia, Canada, Algeria, Mexico, Panama, Costa Rica, Nigeria, Kenya, Mauritius, Tanzania, Cote d'Ivoire, South Africa, Tunisia, Sierra Leone, Zambia, Ghana, Zimbabwe, Uganda, Angola, Ethiopia Republic of Trinidad and Tobago, Dominica, Guatemala, Senegal, Algeria, Cameroon 4. Qatar, Kuwait, Oman, Jordan, Lebanon, Iraq, United Arab Emirates, Saudi Arabia, Bahrain, Egypt, Libya |

| | |
|----------------------------|--|
| Vehicle Attributes | Plate number, license plate color, license plate type |
| Plate Attributes | Vehicle brand, vehicle color, vehicle type |
| Video and Audio | |
| IP Video Input | 32-ch |
| Incoming Bandwidth | 384 Mbps |
| Outgoing Bandwidth | 256 Mbps |
| Video Output Mode | HDMI1/VGA1 simultaneous output, HDMI2/VGA2 simultaneous output |
| CVBS Output | NA |
| Audio Output | 2-ch, RCA (Linear, 1 K Ω) |
| Two-Way Audio | 1-ch, RCA (2.0 Vp-p, 1 K Ω) |
| HDMI 1 Output | 4K (3840 \times 2160) /30Hz , 2K (2560 \times 1440) /60Hz , 1080P (1920 \times 1080) /60Hz , 720P (1280 \times 720) /60Hz |
| HDMI 2 Output | 1080P (1920 \times 1080) /60Hz , 720P (1280 \times 720) /60Hz |
| VGA 1 Output | 1080P (1920 \times 1080) /60Hz , 720P (1280 \times 720) /60Hz |
| VGA 2 Output | 1080P (1920 \times 1080) /60Hz , 720P (1280 \times 720) /60Hz |
| Decoding | |
| Decoding Format | H.265+, H.265, H.264+, H.264 |
| Recording Resolution | 32 MP/24 MP/16 MP/12 MP/8 MP/6 MP/5 MP/4 MP/3 MP/1080p/UXGA/720p/VGA/4CIF/DCIF/2CIF/CIF/QCIF *: Support resolution width/height less than 8192 pixels, total not exceeding 32MP. *: The NVR supports up to 4-ch of >12MP IP video input. |
| Synchronous playback | 16-ch |
| Live View Window Division | 1/2/4/6/8/9/16/25/36 |
| Aux Port Window Division | 1/2/4/6/8/9/16/25/36 |
| Decoding Capability | Enable AI by NVR: 20-ch@1080p (30 fps) Disable AI by NVR: 32-ch@1080p (30 fps) |
| Audio Compression | G.711ulaw/G.711alaw/G.722/G.726/AAC/MP2L2/PCM |
| Dual-Stream Recording | Support |
| Stream Type | Video, Video & Audio |
| Network | |
| Network Interface | 2, RJ-45 10/100/1000 Mbps self-adaptive Ethernet interface |
| Remote Connection | 128 |
| Network Protocol | TCP/IP, DHCP, IPv4, IPv6, DNS, DDNS, NTP, RTSP, SADP, SMTP, SNMP, NFS, iSCSI, ISUP, UPnP™, HTTP, HTTPS, ONVIF, OTAP |
| API | ONVIF (profile S/G); SDK; ISAPI |
| Compatible Browser | IE11, Chrome V57, Firefox V52, Safari V12, Edge V89, or above version |
| RAID | |
| RAID Type | RAID0, RAID1, RAID5, RAID6, RAID10 The RAID function and AI functions cannot be enabled simultaneously. |
| Auxiliary Interface | |
| SATA | 16 SATA interfaces, Hot swap. |
| Serial Interface | 1 RS-232, 1 RS-485 (full-duplex) |
| Capacity | Up to 20 TB capacity for each disk |
| Alarm In/Out | 16/9 |

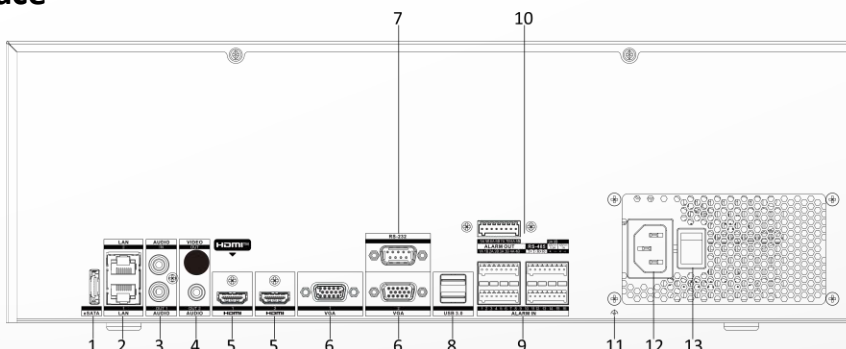
| | |
|------------------------|--|
| eSATA | 1 eSATA interface |
| USB Interface | Front panel: 2× USB 2.0; Rear panel: 2 × USB 3.0 |
| Ctrl 12V | Controllable 12 VDC, 1 A power output for external alarm device; The power will be turned on when the alarm output is triggered. *: The Ctrl 12V power is controlled by alarm output 9. |
| DC 12V | 12 VDC, 1 A power output |
| General | |
| GUI Language | English, Russian, Bulgarian, Hungarian, Greek, German, Italian, Czech, Slovak, French, Polish, Dutch, Portuguese, Spanish, Romanian, Turkish, Japanese, Danish, Swedish Language, Norwegian, Finnish, Korean, Traditional Chinese, Thai, Estonian, Vietnamese, Croatian, Slovenian, Serbian, Latvian, Lithuanian, Uzbek, Kazakh, Arabic, Ukrainian, Kyrgyz, Brazilian Portuguese, Indonesian, Hebrew |
| Power Supply | 100 to 240 VAC, 50 to 60 Hz |
| Consumption | ≤ 50 W (without HDD) |
| Working Temperature | -10 °C to 55 °C (14 °F to 131 °F) |
| Working Humidity | 10% to 90% |
| Chassis | 3U chassis |
| Dimension (W × D × H) | 442 x 498 x 146 mm (17.40" x 19.59" x 5.75") |
| Weight | ≤ 12.5 kg (without HDD, 27.6 lb.) |
| Certification | |
| Obtained Certification | CE, CB, REACH, WEEE, UKCA, RCM, IC, LOA, KC |
| CE | EN 55032, EN 61000-3-2, EN 61000-3-3, EN 55035, EN 50130-4 |

▪ Typical Application

Typical Application



▪ Physical Interface



| No. | Description | No. | Description |
|-----|-----------------|-----|-------------------|
| 1 | eSATA interface | 8 | USB 3.0 interface |

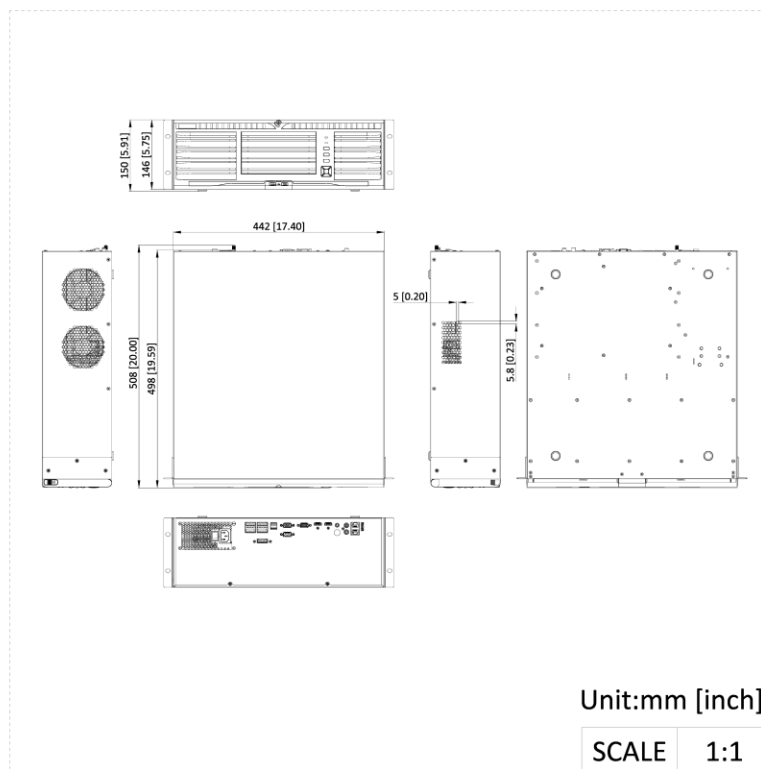
| | | | |
|---|--------------------------|----|---|
| 2 | LAN1/LAN2 interface | 9 | ALARM IN |
| 3 | AUDIO IN/OUT | 10 | ALARM OUT, RS-485, Ctrl 12 V and DC 12 V |
| 4 | AUDIO/VIDEO OUT | 11 | GND |
| 5 | HDMI1/HDMI2 interface | 12 | 100 to 240 VAC power supply |
| 6 | VGA1/VGA2 Interface | 13 | Power switch |
| 7 | RS-232 interface | | |

▪ **Available Model**

DS-9632NXI-I16/VPro(STD)

DS-9632NXI-I16/VPro(NEU)

▪ **Dimension**



See Far, Go Further



www.hikvision.com
support@hikvision.com

